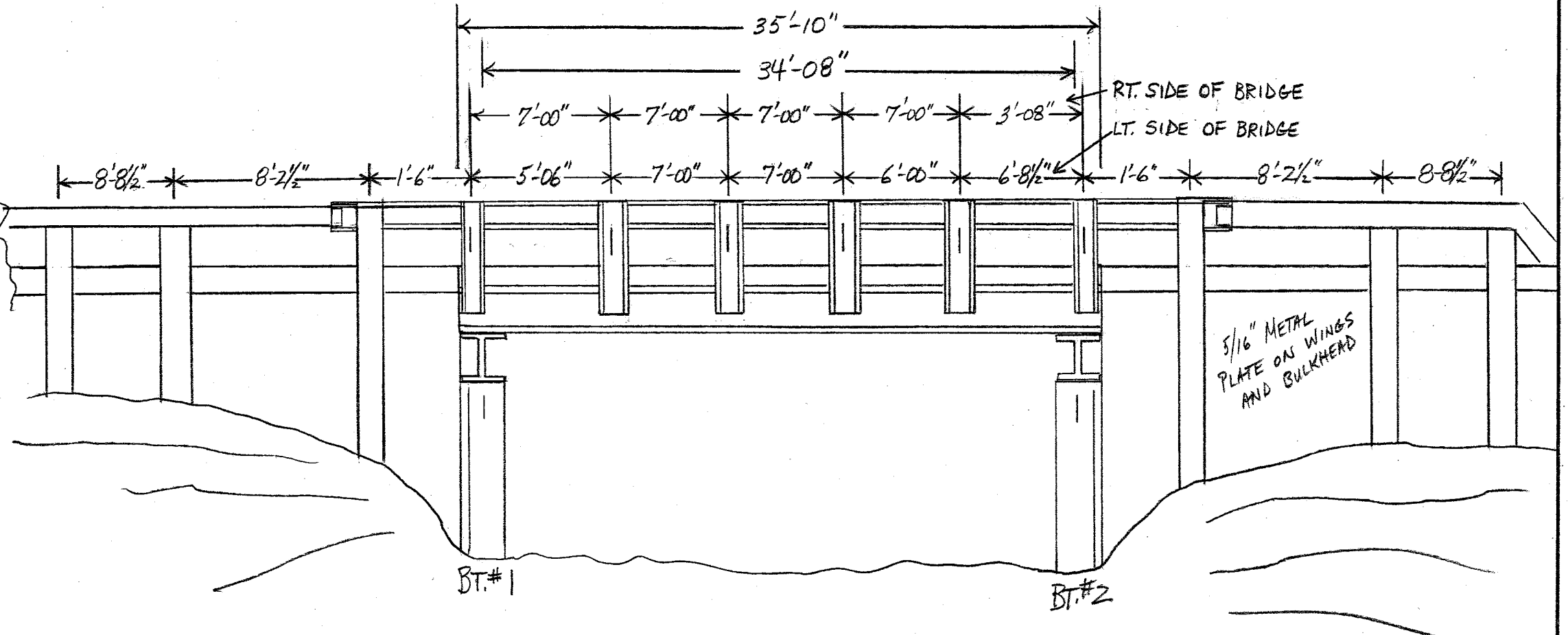


[illegible]

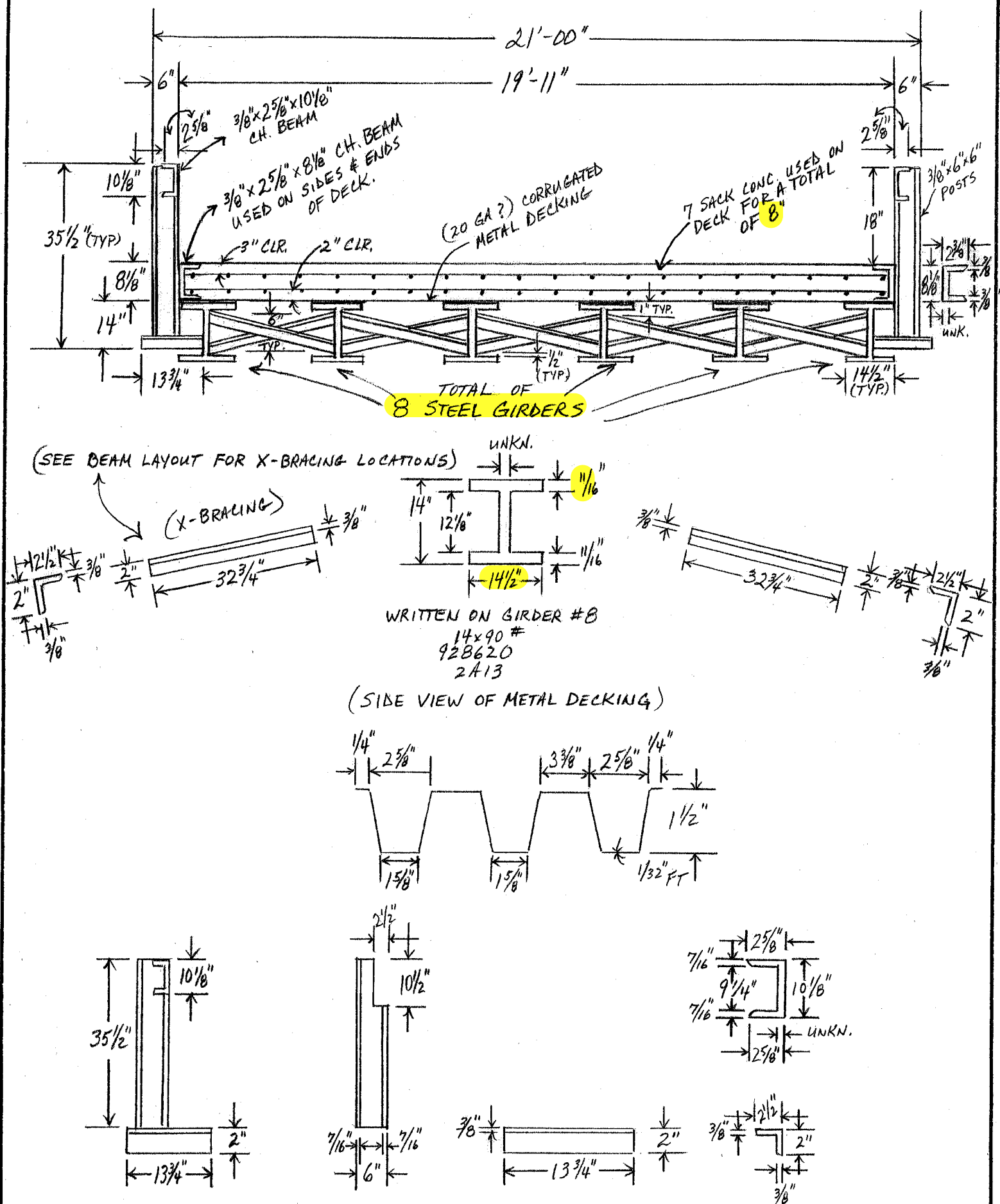
(NO SCALE)

LAYOUT SKETCH

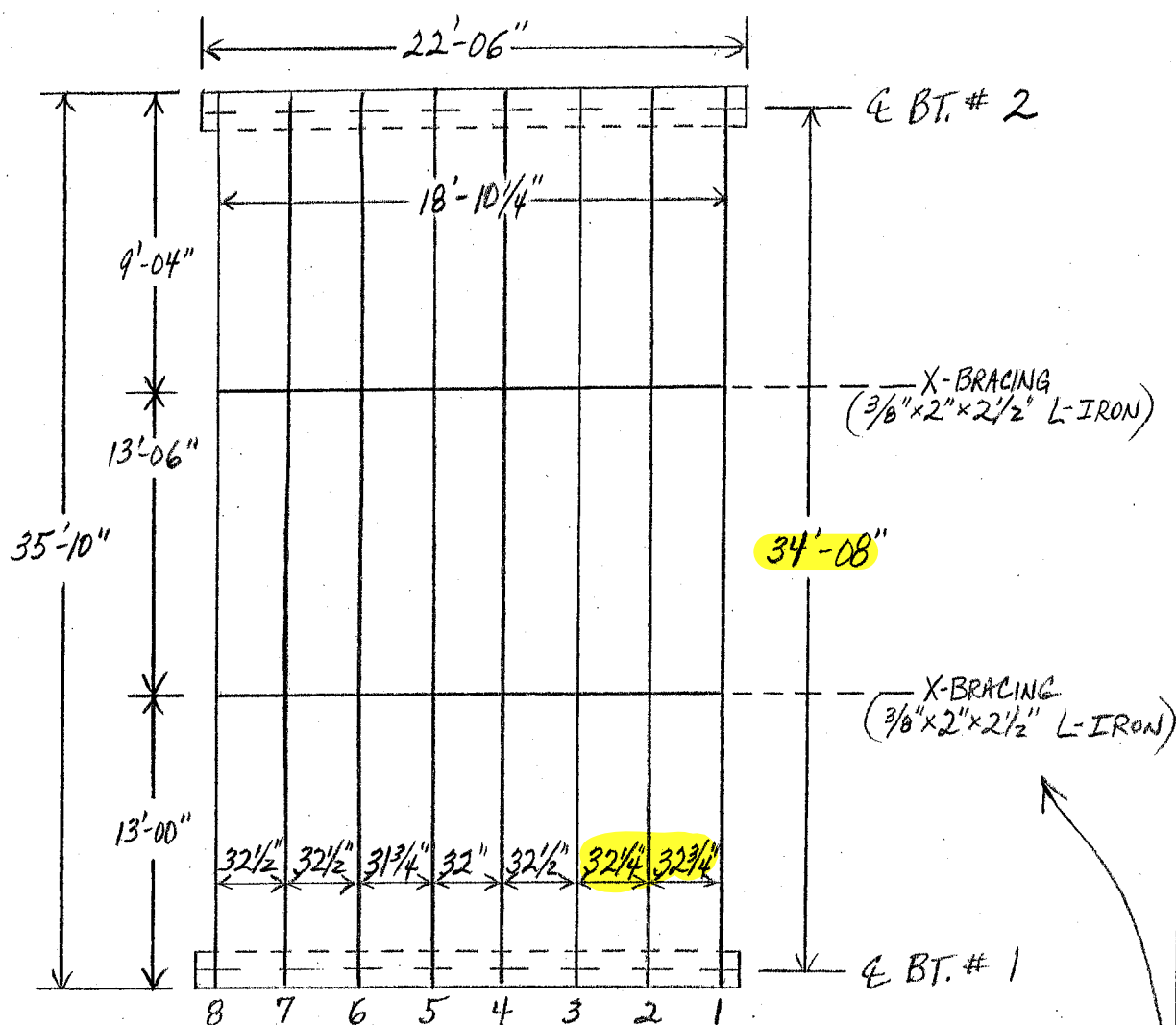


Insp. JCO-MAM
Date 04/10/03
Dist. 03 Co. 41 Little River R. 17 Sec. 00/E Log 394 Br. No. 21722
BRIDGE INSPECTION REPORT — FORM III
P. (1 OF 4)

DECK END VIEW



BEAM LAYOUT



- NOTES :
- 1.) ALL GIRDERS ARE 14 x 90# H-BEAMS.
 - 2.) GIRDER FIELD MEASUREMENTS: 1/16" FLANGE THICKNESS
14 1/2" WIDE FLANGE
13 1/8" HIGH
 - 3.) LOCATION OF X-BRACING SHOWN ON SKETCH ABOVE.

11/16" assumed

Insp. JCO-MAM

Date 04/10/03

BRIDGE INSPECTION REPORT — FORM III

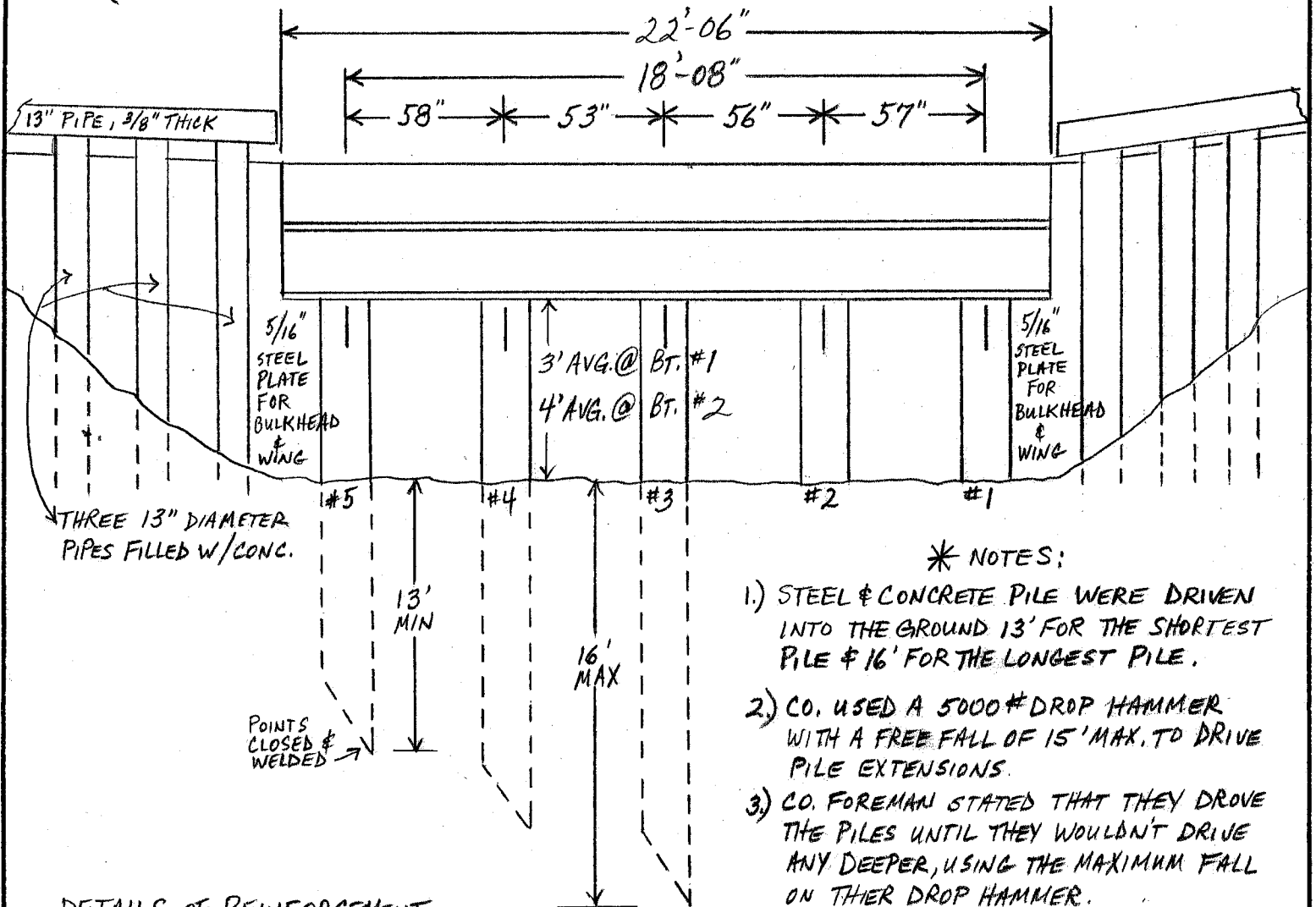
P. (3 OF 4)

Dist. 03 Co. 41 LITTLE RIVER Rt. 17 Sec. 00/F Log 3.94 Br. No. 21722

(NO SCALE)

SUBSTRUCTURE

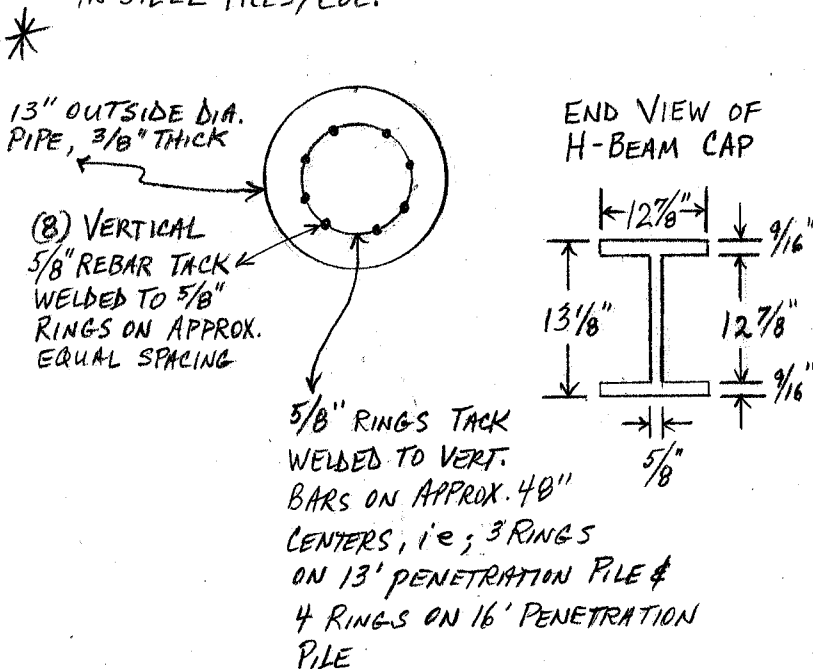
BENTS #1 & #2



* NOTES:

- 1) STEEL & CONCRETE PILE WERE DRIVEN INTO THE GROUND 13' FOR THE SHORTEST PILE & 16' FOR THE LONGEST PILE.
- 2) CO. USED A 5000# DROP HAMMER WITH A FREE FALL OF 15' MAX. TO DRIVE PILE EXTENSIONS.
- 3) CO. FOREMAN STATED THAT THEY DROVE THE PILES UNTIL THEY WOULDN'T DRIVE ANY DEEPER, USING THE MAXIMUM FALL ON THEIR DROP HAMMER.
- 4) PILES WERE DRIVEN, THEN A CAGE OF REBAR WAS PLACED IN THE PIPE, AND 7-SACK CONC. WAS POURED IN THE STEEL PIPE OR PILES.
- 5) 13" O.D. PIPE, WITH 1/2" THICK WALL WAS USED.
- 6) EIGHT 5/8" REBAR, VERTICALLY, WITH 5/8" REBAR BAND HORIZ. ON 48" CENTERS FOR BANDS, WERE USED TO MAKE UP THE CAGES PLACED IN THE PILE EXTENSIONS.

DETAILS OF REINFORCEMENT IN STEEL PILES/COL.



Insp. JCO-MAM

BRIDGE INSPECTION REPORT — FORM III

P. (4 OF 4)

Date 04/10/03

Dist. 03 Co. 41 LITTLE RIVER Rt. 17 Sec. 00/F Log 3.94 Br. No. 21722



